

Halliburton coming to Elmendorf

'Growth continues, and the city of Elmendorf is open to that growth, standing ready to work with business owners to bring more retail and service establishments to our rapidly growing area.'

— Elmendorf City Administrator Cody Dailey



WILLIAM J. GIBBS JR./Reprints at wilsoncountynews.com

Construction continues in the Alamo Junction Rail Park in Elmendorf, as more oil-field services companies establish operations there to be closer to the ongoing oil and natural gas exploration in the Eagle Ford shale. Halliburton in November signed a lease to build a frac sand transload facility on a 20-acre parcel in the park.

By William J. Gibbs Jr.
Wilson County News

ELMENDORF — The pending arrival of oil-field services giant Halliburton to the Alamo Junction Rail Park here could perhaps be a signal of continued forward progress for the city.

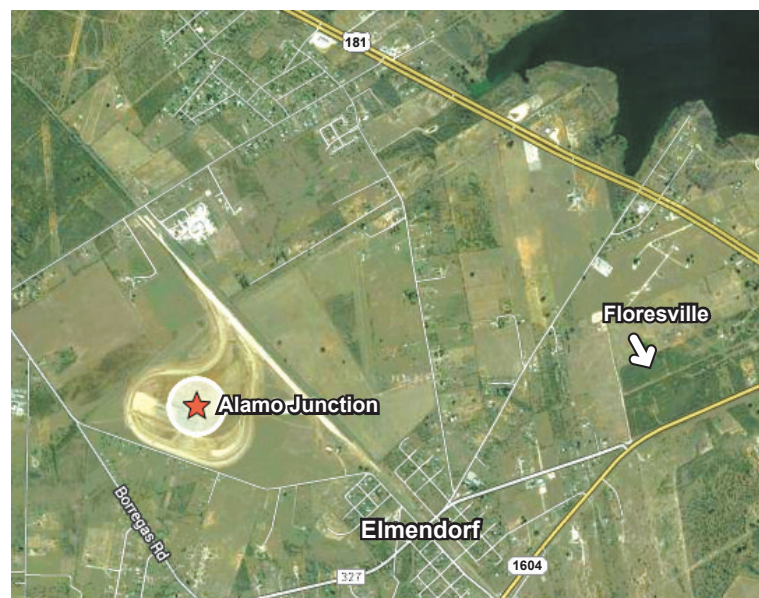
Halliburton spokesman Susie McMichael confirmed that the company signed a lease for 20 acres in the rail-served industrial park located off Old Corpus Christi Road. A sand transload facility, which will support hydraulic fracturing — often referred to as “fracking” — op-

erations within the Eagle Ford shale will be built there. Rail cars will transport frac sand into the park, where it will be loaded onto trucks and transported to drilling sites throughout South Texas.

Elmendorf City Administrator Cody Dailey said Nov. 19, “The City of Elmendorf has endeavored to be as proactive as possible noting that infrastructure, such as roads, will be keys to mutual success. Armed with that knowledge, the city has reached agreements with the developer to help improve Old Corpus Christi Road — a major thoroughfare for the truck traffic — to ensure that the useful life of that road will be extended. We welcome Halliburton and wish them much success in their future.”

The U.S. Census Bureau, in 2013, estimated that 1,578 residents called Elmendorf home. A 5-year estimate from 2008-12 estimated that the city had a civilian-employed population of 725 and the median household income was \$51,607.

Dailey hopes that Halliburton will be a lightning rod to spur other growth by attracting restaurants and retail



GOOGLE

Alamo Junction Rail Park is on the northwestern edge of Elmendorf — a city located between San Antonio and Floresville along the U.S. 181 corridor. The rail-served industrial park has been selected by oil-field services giant Halliburton as the location for a proposed frac sand transload facility.

shops.

“Growth continues, and the city of Elmendorf is open to that growth, standing ready to work with business owners to bring more retail and service establishments to our rapidly growing area,” he said. “Maybe now

H-E-B or Walmart, or franchise restaurants like Dairy Queen or Sonic, will take notice of our community and see the need of the citizens here and the opportunities the city of Elmendorf provides.”

wgibbs@wcn-online.com

ELECTION WATCH

Grove, Tejada face off



Harry Grove



Daniel M. Tejada

See page 2A for Early Voting times, candidate bios, voting numbers.

Crossing the Line, 4A
Holiday Gift Guide,
See Section F

INSIDE:

- Coupons, 6E
- Help Wanted, 6-7D
- Auto Chooser, 11-14D

INSERTS:

American Profile,
Sears, Tractor City,
Bealls, Walmart



FELIPE SALAZAR/Contributor

Friends find the Christmas tree on the Wilson County Courthouse lawn the ideal place to meet and plan their next round of fun Dec. 6, during Christmas Along the Corridor events in downtown Floresville. A host of festive events took place across the area this weekend. See more photos on pages 1B and 5B.

Burglar targets storage units

By William J. Gibbs Jr.
Wilson County News

FLORESVILLE — Police here are investigating a Nov. 23 burglary at the G Street Mini Storage, located near the corner of G Street and U.S. 181.

Detective George Ortiz of the Floresville Police Department said a storage tenant called police to report that computer hardware, a desktop computer, and printer, along with a set of crystal valued at \$3,000, were stolen from the unit. Ortiz said the responding officer noted broken locks on other nearby units. The owners had not yet filed police reports, he said.

Other ongoing investigations by the Floresville Police Department include:

•Nov. 19, a worker at Pruski's Valero reported that someone used a counterfeit \$20 bill to purchase lottery tickets

•Nov. 23, a woman reported that money and her Apple iPhone were stolen when she attended a party at a home in the Northeast residential subdivision off U.S. 181 Business

•Nov. 27, the resident of a unit in the 4D Mobile Home Estates reported that someone broke into their home and stole a laptop computer.

wgibbs@wcn-online.com



God Bless America
Support Our
Troops

Look Inside

AgricultureD
Auto Chooser ...11-14D
Classifieds.....D
Crossword.....4E
Eagle Ford.....4A-5A
Editorial.....10A

Entertainment...2-3B
Medical Directory...9A
Obituaries.....9A, 11A
Occasions.....4B
People & Places...1B, 5B
Professional Dir....2A

Service Dir.....5-6D
Sports.....C
Sudoku.....6E
TV Scene.....3C
Weather.....3D
Youth.....E

Obituaries, 9A, 11A

Larry 'Spanky' Adams
Janelda Anderson
Anna Baumann
Genevieve Bronson
John 'Johnny' Blanch
Donald 'Dominic' Byers
Carl Zigmund

Ruth Donaho
Diane Garcia
Kenn Hanson
Mary Koenning
Otto Schulze Jr.
Gerald Weller



Find us on
facebook.
com/
wilson
countynews

Vol. 41 No. 50

38 pages + 2 Tab sections

